

Hotel Tourism Hospitality Management



PIHMS

Pacific International Hotel Management School

NEW ZEALAND





WHY CHOOSE PIHMS?

NICHE PROGRAMMES IN HOSPITALITY, HOTEL & TOURISM MANAGEMENT:

- Bachelor Degrees
- Postgraduate
- Masters

*Brochures available on request.

UNIQUE LEARNING ENVIRONMENT

PIHMS students live and learn in our hotel. This gives the students the skills, knowledge and experience to pursue a career in the Hotel, Tourism and Hospitality industry.

As well as business management studies, students learn to manage PIHMS as a fully operational hotel, gaining experience in all departments, preparing them for a Paid Industry Placement.

YOUR CLASSROOM IS A HOTEL

Students spend time working and learning in our simulated operational hotel, gaining experience in restaurant, barista, bar, kitchen, front office & housekeeping service. Students will also be introduced to, and undertake management roles throughout the hotel school.

At PIHMS we care about you!

Our staff are passionate and care about getting you to where you want to be.

in a hotel

LIVE

LEARN

practical skills

up to NZ\$55,000

EARN

JOBS

ONLY PROVIDER WHERE YOU CAN GRADUATE WITH A DEGREE AND ONE YEAR PAID INDUSTRY PLACEMENT

96% OF ALL GRADUATES ARE EMPLOYED IN THE INDUSTRY WITHIN 3 MONTHS OF GRADUATION

FOUR INTAKES A YEAR

LOCATED IN AWARD WINNING TARANAKI - LONELY PLANET

“ Study with the
adventure of a
gap year. ”



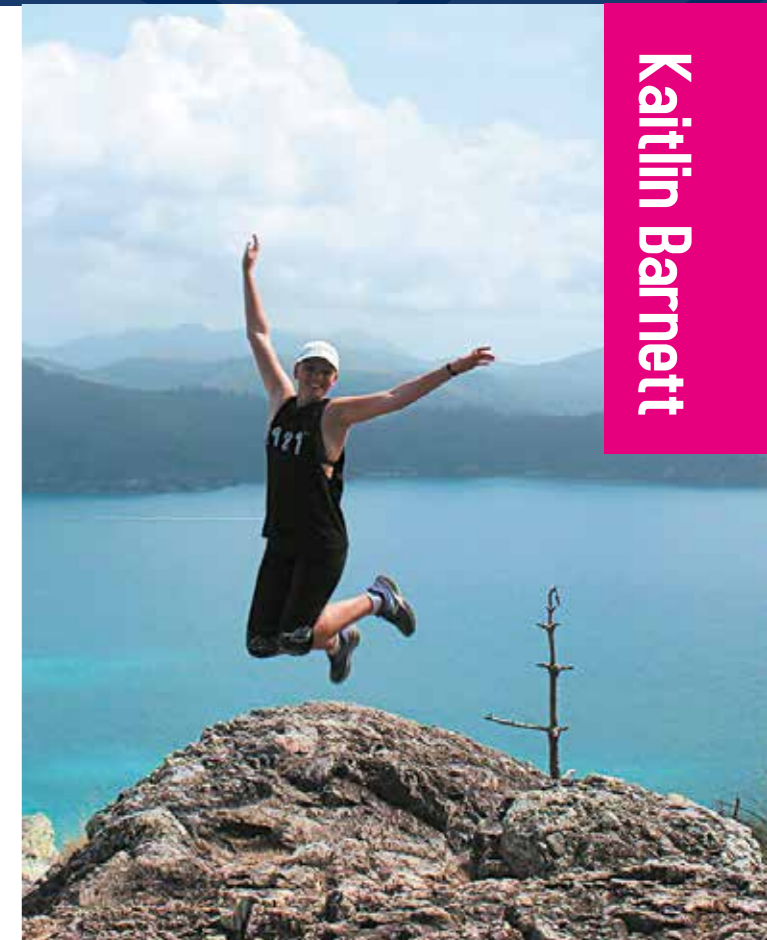
PAID INDUSTRY PLACEMENT

STUDY AND TRAVEL

- A vital component of all PIHMS courses is our Paid Industry Placement.
- Every student that successfully completes the on-campus segment of our courses (business management studies and practical training) will go on to do the Paid Industry Placement.
- Paid Industry Placement is your path to long-term Hotel, Tourism and Hospitality careers in New Zealand and beyond. We see it as the vital link between your learning and the ‘real world’.
- Students will have completed 6 months or 1 year (depending on programme) full time employment with a Hotel and can earn up to \$55,000 NZD (indicative salary for two 6 month placement).
- Students are introduced to hotels throughout New Zealand. Worldwide placement opportunities are also available.
- See www.pihms.ac.nz for industry placement conditions.

Employers are seeking people with skills and prior work experience - PIHMS Paid Industry Placement ensures that you have both! Therefore employers will want you when you graduate and is a contributing factor to our high graduate employment rate.

Pihms will find and match you to a hotel that is right for you!



Kaitlin Barnett

For my second industry placement, I was lucky enough to go to Hamilton Island, in the Whitsundays where I was working in Rooms Division.

The managers and supervisors were very supportive, they provided fruit and Powerade on busy days to help energize us.

There were a lot of opportunities to gain experience in some of the other outlets on the island such as all the restaurants and bars, guest services, events and housekeeping at the luxury holiday homes.

Other than working here I have had the opportunity to visit the Great Barrier Reef and Whitehaven beach. I have been paddle boarding, catamaran sailing and hiking to the highest points on the island and to remote beaches.

PIHMS PROGRAMMES

create a life
worth sharing



LEVEL 7

Bachelor of Applied Hospitality & Tourism Management

Year 1
Academic
Food and
Beverage

Industry Placement

Bachelor of Applied Hospitality & Tourism Management

Year 2
Academic
Rooms
Division

Industry Placement

Bachelor of Applied Hospitality & Tourism Management

Year 3
Academic
Management

LEVEL 8

Postgraduate Diploma in
Hotel Management

1.5 Years
Academic
Operations
Management

Industry Placement

LEVEL 9

Master of
Hotel Management

“ The PIHMS team are
passionate about
your journey. ”



WWW.PIHMS.AC.NZ

NZQA
LEVEL 7

BACHELOR OF APPLIED HOSPITALITY & TOURISM MANAGEMENT (370 CREDITS)

Course Overview

The PIHMS Bachelor Degree comprises 3 years of study, including a combination of business studies, practical training and Paid Industry Placement.

- Year 1 & 2 students are fully immersed in the PIHMS Hotel Culture.
- Year 1 & 2 students learn a combination of business studies and practical subjects, (Food & Beverage Management in Year 1, Rooms Division in Year 2).

- Year 3 studies are management focused, culminating in an Event Management Project.
- Accommodation in PIHMS 150 room hotel is compulsory for both year 1 & 2 students and includes all meals.
- Year 3 students have the option to live off campus.

Entry Requirements

- NZ University Entrance or equivalent International Qualification

Please refer to www.pihms.ac.nz for full entry criteria.

Fees

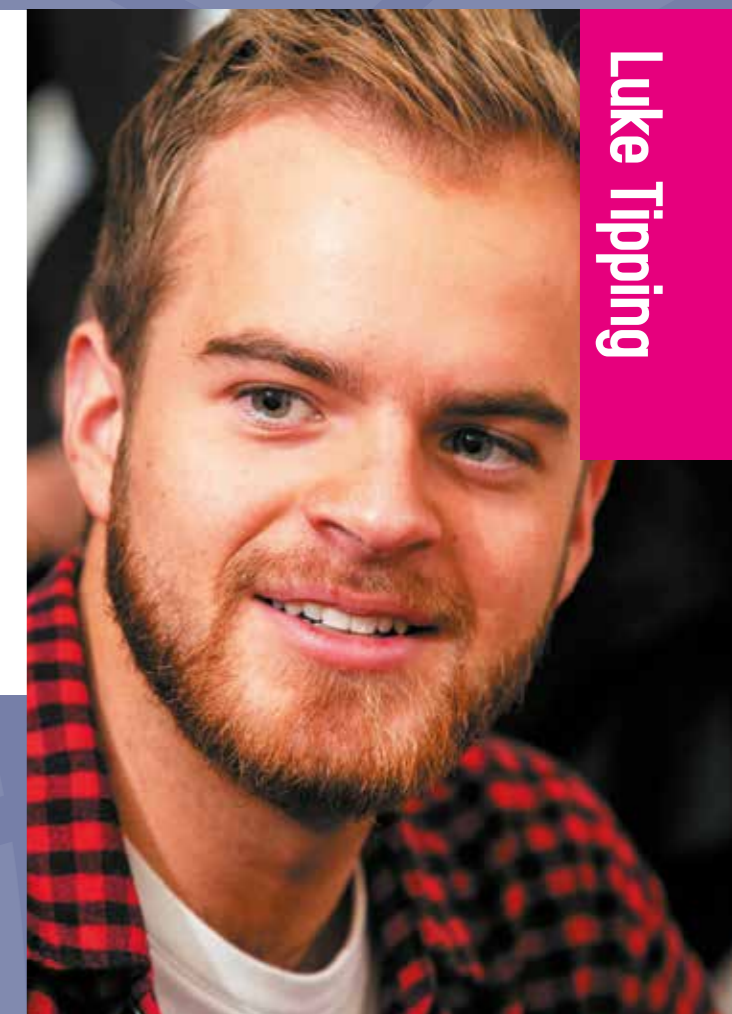
- For information on PIHMS fees please refer to www.pihms.ac.nz

See if I qualify

www.pihms.ac.nz/onlineapplication

info@pihms.ac.nz

Luke Tipping



Year 1	Paid Industry Placement
BUSINESS STUDIES (3 MONTHS)	
<ul style="list-style-type: none"> • Management • Marketing • Tourism • Business Evaluation • Research • Applied Hospitality 	
PRACTICAL TRAINING (3 MONTHS)	
Food and Beverage Operations	

Year 2	Paid Industry Placement
BUSINESS STUDIES (3 MONTHS)	
<ul style="list-style-type: none"> • Management • Marketing • Tourism • Business Evaluation • Research • Event Management • Applied Hospitality 	
PRACTICAL TRAINING (3 MONTHS)	
Rooms Division Operations	

Year 3
BUSINESS STUDIES (1 YEAR)
<ul style="list-style-type: none"> • Management • Marketing • Tourism • Business Evaluation • Applied Research Project • Applied Hospitality • Event Management (project)
Get creative and host an epic event as part of this hands on course!

My time at PIHMS has been amazing. I have been able to make friends, enjoy life around Taranaki and to travel internationally for work.

I've worked for One&Only Hayman Island and Qualia Resort Hamilton Island in Food & Beverage & Housekeeping. It allowed me to explore coral reefs, fly in private helicopters, enjoy many staff parties and meet famous celebrities!

I chose PIHMS because of the practical training. With the placements I have completed, I have made connections, which has created many valuable opportunities for me.

I would recommend PIHMS for an interactive, fun campus and study experience, and to open a world of possibilities.

“PIHMS has been such a great experience.”



GRADUATE. GET GLOBAL!



Major career highlights since graduating from PIHMS include winning the NZ Hotelier of the Year award. I travel extensively and visit hotels located in many countries including South East Asia and the USA.

Ben Schumacher
Regional Director Franchise Operations, WYNDHAM HOTELS, BRISBANE

Ben Schumacher

96%

of PIHMS students receive employment within 3 months of graduating.

STUDY IN THE BEAUTIFUL TARANAKI



Located between the majestic Mt Taranaki and the scenic West Coast, midway between Auckland and Wellington, New Plymouth is the ideal location.

PIHMS is located 10-15 minutes from the City Centre, local beaches and sports facilities. PIHMS students have easy access to the outdoors that enables them to enjoy Taranaki life.

There will be plenty to keep you busy in our lively city enabling you to enjoy a superb lifestyle while you study. Mt Taranaki and the surrounding Egmont National Park are home to exceptional hiking, snowboarding or skiing. We are also right by the sea, which means you can swim, sail, dive or go fishing; not to mention the world class surf beaches throughout the region.

Beyond the natural landscape New Plymouth has a thriving City Centre, hosting many International events, including WOMAD (World of music arts & dance); so whether it's enjoying the many cafés, clubs and restaurants or just relaxing along New Plymouth's famous coastal walkway, New Plymouth is the right place to live and study.

For more information about New Plymouth visit www.visitnewplymouth.nz/

To find out more about the region visit www.taranaki.info

THE RIGHT INFORMATION

Experience PIHMS for yourself by attending one of our on campus Career Weeks. New Zealand students: contact your high school careers advisor or for more information check out:

www.pihms.ac.nz.

PIHMS has agreed to observe and be bound by the Domestic Code of Practice for the Pastoral Care of Domestic students. Copies of the code are available on request or at:

www.nzqa.govt.nz.

Accident Compensation Corporation provides accident insurance for all New Zealand citizens, residents and temporary visitors to New Zealand, but you may still be liable for other medical and related costs. Further information can be viewed on the ACC website www.acc.co.nz.

For information regarding student loans please refer to Studylink at www.studylink.govt.nz.

PIHMS fees should be considered in conjunction with loans, allowances, scholarships and PIHMS Paid Industry Placement earnings. There are a wide variety of funding options for you to consider, so make sure you check out all the available options. Current fee structures can also be found on the PIHMS website; www.pihms.ac.nz.

Receive full visa support through our students online visa processing. Variation of conditions to the study visa allowing work rights for PIHMS Paid Industry Placement will be applied for during the enrolment process.

For full details of visa requirements visit www.immigration.govt.nz.

It is a pastoral care requirement of the Ministry of Education that all International students hold health insurance. Students can obtain insurance through their own elected provider or through PIHMS health insurance provider, details of students insurance can be found at

www.studentcareinsurance.com.

Useful Links:

www.immigration.govt.nz

www.education.govt.nz

www.consumerprotection.govt.nz/Guarantees

www.educationcounts.govt.nz

www.asa.co.nz

www.dbh.govt.nz (off campus students)

www.nzta.govt.nz





PIHMS

Pacific International Hotel Management School

NEW ZEALAND

WWW.PIHMS.AC.NZ